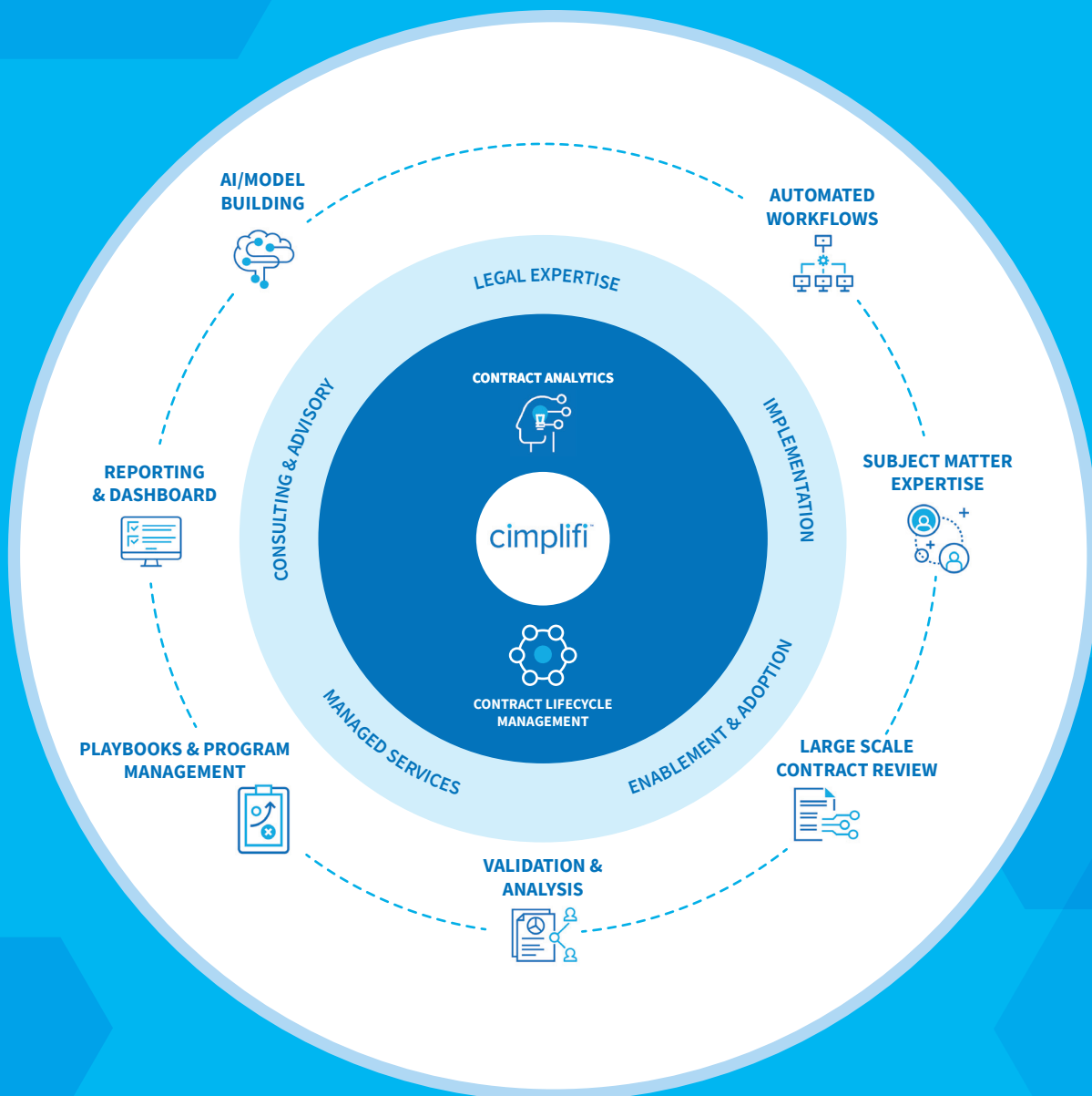


Contract Analytics & Lifecycle Management

Next-generation AI-powered solutions distill complexities,
streamline processes, and maximize value.

CALM™ | A Convergence of Capabilities, Competencies, and Insights

With decades of expertise analyzing data and automating workflows, we offer an unmatched ability to apply analytics and implement AI-powered solutions to get the most from your technology investment.



Tailored, AI-Powered Solutions

Cimplifi™ can tackle your most complex contract and document portfolios with technology-driven, expert-led solutions designed to reduce volume, cost, and risk throughout the contract lifecycle.



Contract Analytics

OUR EXPERTS KNOW HOW TO BUILD AI MODELS THAT DELIVER UNPARALLELED EFFICIENCY, CONFIDENT VISIBILITY, AND ACTIONABLE INSIGHT.



We apply custom analytics and workflows to efficiently extract, analyze, and normalize data from large volumes of complex documents—far more effectively than manual contract review.



We leverage advanced technology and subject matter expertise to surface issues and deliver visibility into critical contractual information, helping reduce risk and exposure.



Our AI-powered analytics models find nuanced and specific language buried within complex contractual information, and improve the accuracy of the data extracted.

THIRD PARTY PAPER

Building AI models to extract critical contractual information from third party paper.

CONTRACT FAMILY MAPPING

Mapping legal documents into contract families.

TABULAR DATA EXTRACTION

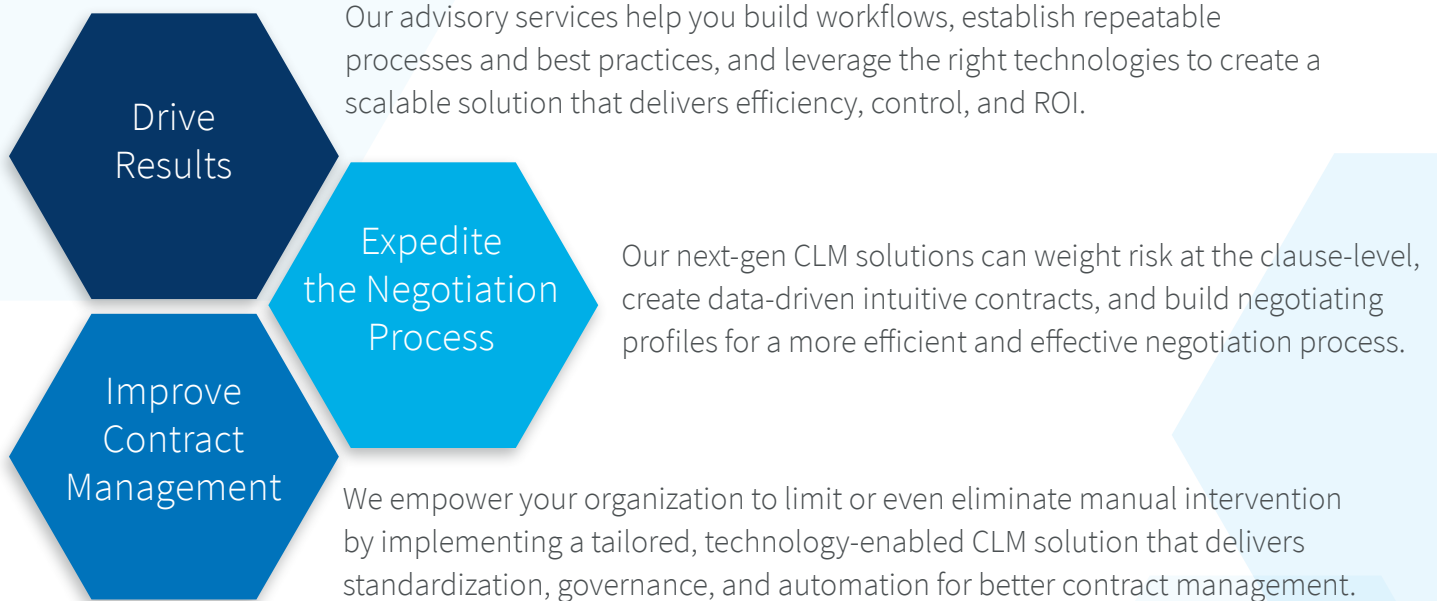
Extracting information from tables and grids.

CREATING A CENTER OF EXCELLENCE

Building an industrial-strength Center of Excellence (COE) in-house.

Contract Lifecycle Management

OUR ADVISORY AND IMPLEMENTATION SOLUTIONS BRIDGE LEGAL, TECHNOLOGY, AND THE AI GAP TO DELIVER INTELLIGENCE, SIMPLIFY YOUR CLM PLATFORM, AND EMPOWER YOUR PEOPLE.



FACILITATING ADOPTION

Methodologies and training approaches support new ways of working.

THIRD PARTY PAPER

Automated workflows facilitate third party negotiations.

AI-DRIVEN WORKFLOWS

Contract analytics drive automated CLM workflows.

REPAPERING

Tailored solutions facilitate and automate repapering and notification.

Contract Discovery

**YOU KNOW WHERE YOUR CONTRACTS SHOULD BE,
OUR DISCOVERY EXPERTS TRACK DOWN WHERE
THEY ARE AND WHAT'S IN THEM.**

Collections
& Forensics
Expertise

Our team is skilled in data extraction, ingestion & processing, migration, and normalization. Forensic examiners deliver precise, organized, and easy-to-follow reports to drive better decisions and resolutions.

Expansive
Approach

We leverage 20+ years of time-tested processes developed for eDiscovery, advanced analytics, best practices, and proprietary workflows for an expansive approach to contract collection and identification.

Broad Reach,
Deep Insight

Using industry-leading tools, we collect data from across your enterprise, regardless of location, source, or type, and deliver insight into its attributes and content in just minutes.

CONTRACT MAPPING

We investigate and identify legacy and emerging data sources and their locations to provide critical insight into your contract ecosystem.

CONTRACT COLLECTIONS

On-site or remote collection from multiple unstructured and structured data sources including Ariba, Apptus, Slack, MS 365, WhatsApp, MS Teams, hard drives and mobile devices.

VALIDATION & ANALYSIS

Our analysts bridge the AI gap and distill complexity to deliver a cost-effective, timely, and high-quality contract analysis.

TECHNOLOGY

Access an expansive ecosystem of industry-leading software, including DocuSign, X1, F Response, Aid4Mail and Cellebrite.

AI-Powered Managed Services

AS EXPERTS THAT HAVE EARNED THEIR IN-HOUSE EXPERIENCE FROM THE LEGAL AND FINANCIAL SERVICES SECTORS WITH DEEP OPERATIONS, VERTICAL, AND TECHNOLOGY EXPERIENCE, WE CAN HELP YOU RUN YOUR CONTRACT ANALYTICS AND LIFECYCLE MANAGEMENT PROJECTS EFFECTIVELY AND EFFICIENTLY.



VOLUME PROCESSING

When you need a team to perform significant volumes of contract review, we provide trained teams of experts with certifications to assist with implementing or running your CLM.

STAKEHOLDER MANAGEMENT

Our team works hand in hand with the head of legal operations and line of business stakeholders, championing AI CLM best practices and bringing in additional technical expertise to support or augment existing staff.

FACILITATING ADOPTION

Methodologies and training approaches support new ways of working.

FLEXIBLE CONTRACTING CAPACITY

We can also provide shorter-term flexible contracting capacity to bolster business-as-usual operations.

CI Contract

CONTRACT ANALYTICS AND EDISCOVERY CONVERGE IN THE INDUSTRY'S FIRST END-TO-END CONTRACT ANALYTICS AND REVIEW PLATFORM LEVERAGING THE MOST ADVANCED AI TECHNOLOGIES IN THE INDUSTRY.



STREAMLINE & AUTOMATE PROCESSES

Using analytics to develop more efficient and cost-effective workflows, we can automate processes that extract, analyze, and normalize data from volumes of contracts and quickly deliver an analysis that would take weeks to complete with manual review.

GAIN TRANSPARENCY & VISIBILITY

By applying advanced technology and subject matter expertise to identify a wide range of issues and provide visibility into critical contractual information, we can help you reduce risk and exposure.

EXTRACT CRITICAL DATA

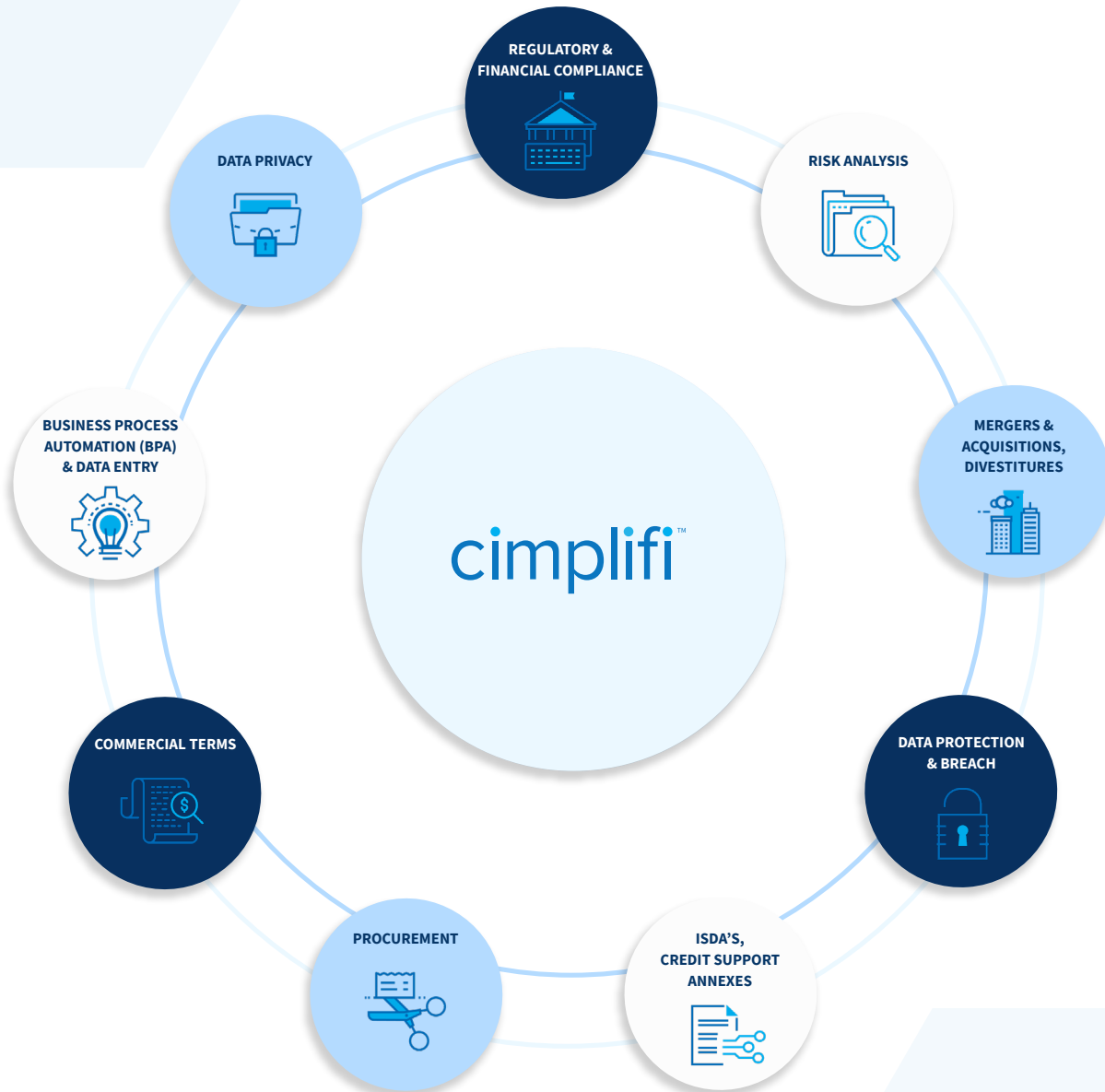
With AI-powered technology, we can build models to find specific content and clauses within hidden, obscure and complex contractual data and increase the accuracy of the information extracted from each contract.

RATIONALIZE YOUR INVESTMENT

Manage large-scale contract reviews without requiring a considerable investment in additional resources and technology. CI Contract can quickly review and analyze millions of contracts, surfacing key data.

One Partner, Multiple Use-Cases

WE TACKLE YOUR MOST COMPLEX CHALLENGES WITH CALM SOLUTIONS THAT DRIVE MEASURABLE VALUE.



SPEED TO INSIGHT

It takes only 1-3 days to build an AI model and start generating actionable data.

SIGNIFICANT COST SAVINGS

Every \$1 invested in AI and services saves up to \$12 in legal fees for compelling operating cost efficiencies.

PROCESSING EFFICIENCY

Documents reviewed with AI can be completed in just 2.5 minutes, 200% faster than manual review.

SPEED TO RESULTS

By 2023, AI implementations are expected to enable 30% faster contract negotiation and review.

Advisory Competencies & Services

OUR CALM EXPERTS HELP DRIVE TRANSFORMATION, EMPOWERMENT, AND OPTIMIZATION TO REDUCE COSTS, RISK, AND EFFORT.

LEGAL EXPERTISE

Our practices are attorney and expert-led, helping to bridge the gap between legal, technology and implementation.



PROCESS IMPROVEMENT

We help clients operate more efficiently, embrace optimization and automation, and assist with benchmarking and best practices.



CREATING CENTERS OF EXCELLENCE

We partner with clients to build and manage industrial-strength Centers of Excellence (CofE) in-house.



OPERATING MODEL DESIGN

We design scalable, agile operating models tailored to help clients harness the value of their data and their technology.



REGULATORY IMPACT ASSESSMENT

We help clients adapt to new regulatory requirements and offer contract analytics solutions tailored to specific outcomes such as preparedness and compliance.



Leveraging Technology

OUR AGILE, SCALABLE DELIVERY MODEL CAN BE QUICKLY DEPLOYED AND IMPLEMENTED.

CURATED ECOSYSTEM

Clients get access to our expansive platform of curated, industry-leading analytics tools, including DocuSign.

REPORTING & DASHBOARD

We deliver data visualization, reporting, and an analytics dashboard to help clients gain insight and control.

IMPLEMENTATION SUPPORT

We help clients implement automated CLM processes and systems that support new, optimized ways of working.



AI/MODEL BUILDING

We leverage latent semantic indexing (LSI), natural language processing (NLP), and machine learning tools to maximize automation and significantly reduce volume for review.

DATA EXTRACTION & MIGRATION

Our analysts bridge the AI gap by applying technical expertise, legal comprehension, advanced analytics, and proven workflows to quickly and effectively extract critical data. Using sophisticated tools to transform contract data to the correct formatting before migration and validate post-migration data, we ensure accuracy and completeness to inform critical decision-making.



POWER BI

An intuitive, configurable real-time dashboard visualizes complete, clean, accurate contract data points. Improving transparency and insights facilitates a more accessible analysis of your critical contractual information, providing a more precise line of sight to quickly answer questions about complex contract portfolios, reducing data volume, cost and risk.



CI CONTRACT

By combining the industry's most advanced AI technologies, CI Contract efficiently expedites the process of large-scale contract review by searching, de-duplicating, analyzing and extracting critical data across millions of contracts, rapidly surfacing actionable insights to accelerate the critical decision-making associated with those tasks and obligations that require acute accuracy at pace.



+ a b l e a u

Powerful data visualisation tools combine visual analysis with the power of data science to help transform your contract data into intuitive insights for decision-making.

A Simply Better Experience

WE OFFER FLEXIBLE CONTRACTING CAPACITY TO BOLSTER BUSINESS-AS-USUAL OPERATIONS OR CONCLUDE YOUR CONTRACT LIFECYCLE PROJECTS.

TRAINING & DEVELOPMENT

We offer tailored, next-level pre-deployment training and education to ensure day-one readiness, competency, and confidence.

ANALYTICS RESOURCING SOLUTIONS

A deep bench of analysts offer legal, practical, and analytical know-how and can bridge the AI gap by applying expertise in using the tools and an understanding of legal documents.

AI-POWERED MANAGED SERVICES FOR CONTRACTS

Through our AI-powered managed services, we use contract analytics, AI, and other emerging technologies to dramatically reduce the number of people required for a process or project, maximizing the benefit and value of your technologies.



QUALITY ASSURANCE AND TESTING

We combine skilled resources, expertise, and best practices to manage, execute, and support testing and quality control across the end-to-end delivery cycle.

PROJECT AND PROGRAM MANAGEMENT

Our professional services team supports and delivers end-to-end contract analytics and contract lifecycle management solutions across the project lifecycle.

FOR YOUR LONGER-TERM CONTRACTING NEEDS, OUR AI-POWERED MANAGED SERVICES BOOST YOUR IN-HOUSE LEGAL TEAMS PRODUCTIVITY AND AGILITY, IMPROVING EFFICIENCY AND MINIMIZING COST THROUGH AUTOMATION.

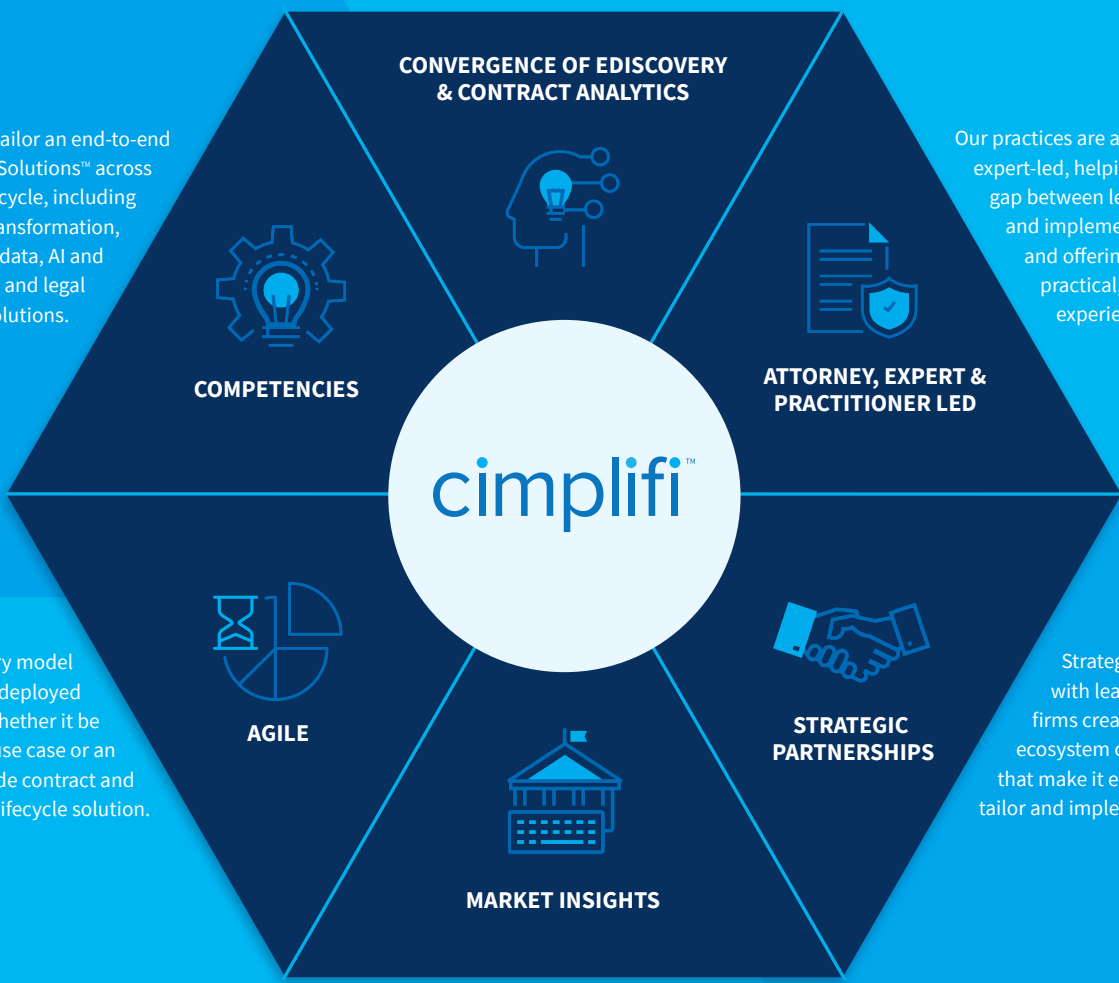
The Cimplifi Difference

OUR CLIENT-CENTRIC ECOSYSTEM AND EXPERIENCE DELIVERS EXPERTISE, INSIGHT, AND TAILORED, TECHNOLOGY-DRIVEN CALM SOLUTIONS.

We leverage proven processes and methodologies with AI and machine learning to pioneer the industry's first unified offering and streamline multiple use-cases.

We can tailor an end-to-end Cimplifi Legal Solutions™ across the contract lifecycle, including advisory and transformation, technology, data, AI and machine learning, and legal ops solutions.

Our practices are attorney and expert-led, helping to bridge the gap between legal, technology, and implementation, and offering decades of practical, hands-on experience.



Our agile delivery model can be quickly deployed and scaled, whether it be for a specific use case or an enterprise-wide contract and document lifecycle solution.

Strategic partnerships with leading FinTech firms create an expansive ecosystem of curated tools that make it easy for clients to tailor and implement solutions.

We have deep market expertise across industry sectors, and are frequent advisors to regulatory agencies, industry intermediaries, and trade associations.

With Cimplifi, you can be sure you get the benefit from your analytics and get the most from your technology investment.

Let us show you how we can distill complexities, deliver insights, and streamline processes for more efficiency, confidence, and cost savings. Get in touch!

CALM@CIMPLIFI.COM

PHONE 833.215.2667

cimplifi.com

#keepCALMandcontracton